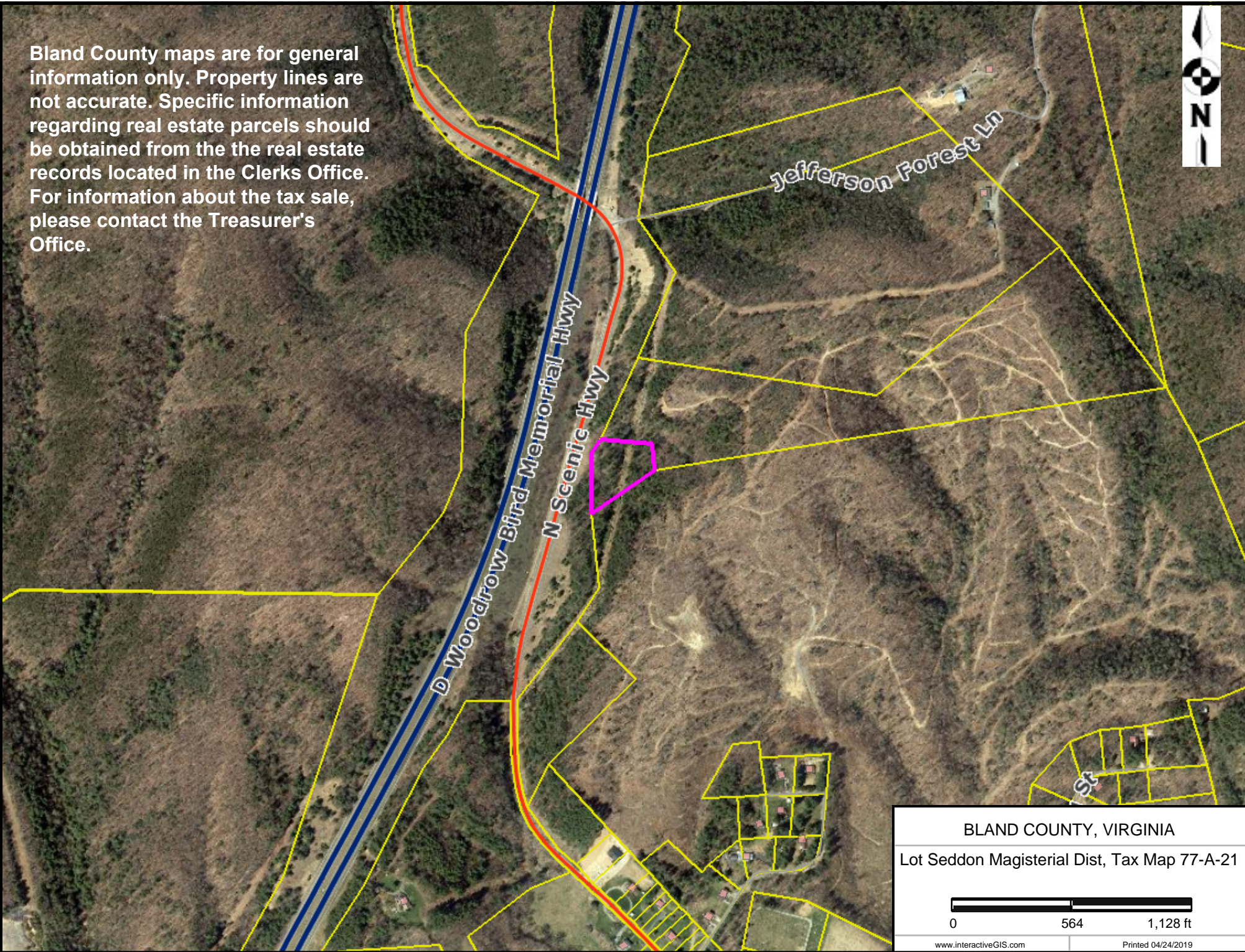


Bland County maps are for general information only. Property lines are not accurate. Specific information regarding real estate parcels should be obtained from the the real estate records located in the Clerks Office. For information about the tax sale, please contact the Treasurer's Office.



BLAND COUNTY, VIRGINIA

Lot Seddon Magisterial Dist, Tax Map 77-A-21

0 564 1,128 ft

[www.interactiveGIS.com](http://www.interactiveGIS.com) Printed 04/24/2019